

# MONTHLY MEMBERSHIP PROGRESS REPORT

District 3 NW

Results as of: 9/30/2023

GMT:

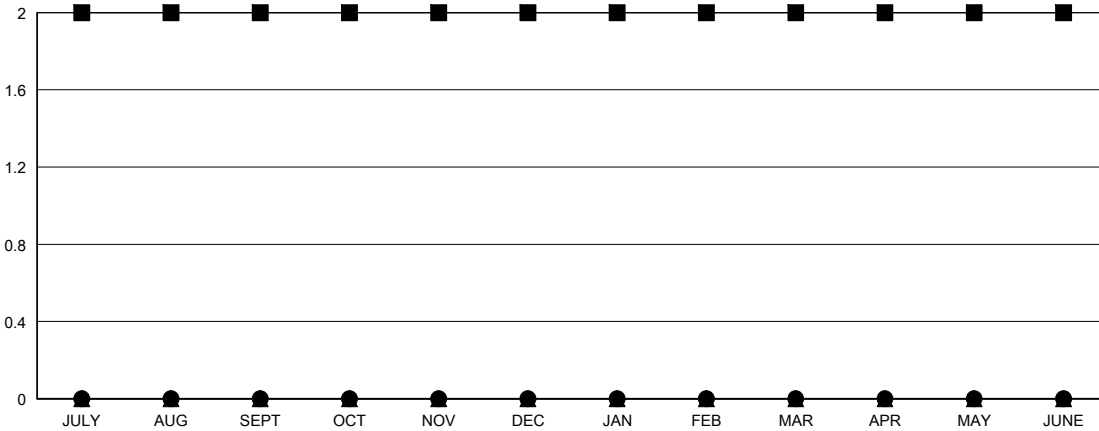
LOCATION OKLAHOMA

GMT CA

| Clubs                 |               |           |               |
|-----------------------|---------------|-----------|---------------|
| RESULTS FOR 2023-2024 |               |           |               |
| QUARTER               | NEW CLUB GOAL | NEW CLUBS | DROPPED CLUBS |
| JULY/AUG/SEPT         | 2             | 0         | 0             |
| OCT/NOV/DEC           | 0             | 0         | 0             |
| JAN/FEB/MAR           | 0             | 0         | 0             |
| APR/MAY/JUNE          | 0             | 0         | 0             |

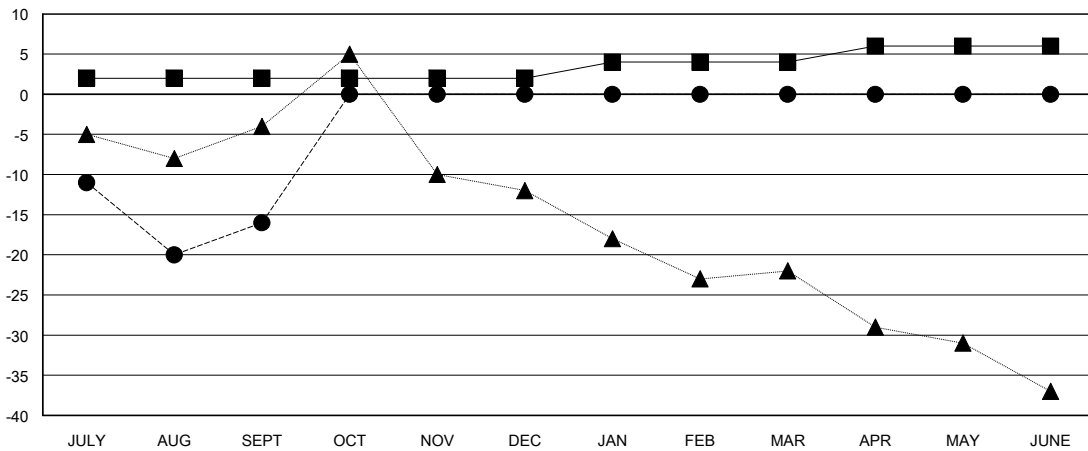
| Members               |                        |                      |  |
|-----------------------|------------------------|----------------------|--|
| RESULTS FOR 2023-2024 |                        |                      |  |
| QUARTER               | MEMBER GROWTH NET GOAL | MEMBER GROWTH ACTUAL | DROPPED MEMBERS ACTUAL (including transfers) |
| JULY/AUG/SEPT         | 2                      | 26                   | 41   |
| OCT/NOV/DEC           | 0                      | 0                    | 0  |
| JAN/FEB/MAR           | 2                      | 0                    | 0  |
| APR/MAY/JUNE          | 2                      | 0                    | 0  |

GOALS AND ACTUAL NEW CLUBS CUMULATIVE



- - CURRENT YEAR GOALS FOR NEW CLUBS
- - CURRENT YEAR ACTUAL NEW CLUBS
- ▲ - LAST YEAR ACTUAL NEW CLUBS

GOALS AND ACTUAL MEMBERS CUMULATIVE



- - MEMBER GROWTH NET GOAL
- - MEMBER GROWTH ACTUAL
- ▲ - LAST YEAR MEMBERSHIP ACTUAL

|   |   |  |
|---|---|--|
| DROPPED CLUBS: 0  | 13 CLUBS OF 41 ADDED 1 OR MORE NEW MEMBERS                | <b>GENDER DISTRIBUTION</b><br>MALE 722 (73.75%)<br>FEMALE 256 (26.15%) |
| <b>DROPPED MEMBERS</b><br>DECEASED 5<br>CLUB CANCELLED 0<br>OTHER 36<br><b>TOTAL 41</b> | <a href="#">CLICK HERE FOR CUMULATIVE MEMBERSHIP DATA</a> | TOTAL FAMILY UNIT MEMBERS 134<br>FAMILY MEMBERS PAYING HALF DUES 68    |